

G+

DO YOU KNOW WHAT YOU' RE DRINKING EVERY DAY?

Water is an essential element in our lives, accounting for about 50-70% of body weight. It is not only the foundation of life but also responsible for regulating body temperature, transporting nutrients and oxygen, eliminating waste, lubricating joints, and protecting sensitive tissues.

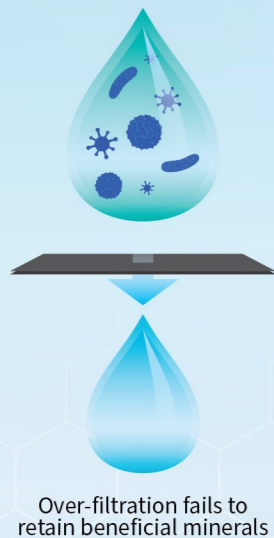


Ultrafiltration Technology



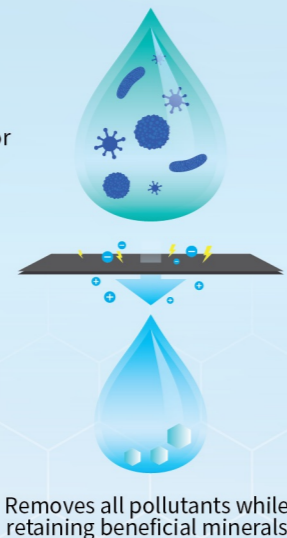
Scale buildup and insufficient filtration

Reverse Osmosis RO Technology



Over-filtration fails to retain beneficial minerals

G+ Nanofiltration Technology



Removes all pollutants while retaining beneficial minerals

8 VITAL MINERALS FOR HEALTHY BODY

Calcium (Ca)

- Supports bone health, muscle function, and nerve signaling

Magnesium (Mg)

- Aids in energy production, muscle contractions, and regulate blood pressure

Potassium (K)

- Helps maintain fluid balance, supports heart, muscle and nerve function

Sodium (Na)

- Essential for fluid balance and proper muscle and nerve function

Zinc (Zn)

- Boosts the immune system, supports wound healing

Selenium (Se)

- Acts as an antioxidant, supports metabolism

Strontium (Sr)

- Help increase bone mineral density

Silicic Acid (H₂SiO₃)

- Stimulating collagen production



NECESSITY FOR DIFFERENT PREMISES



Office



School



Pantry



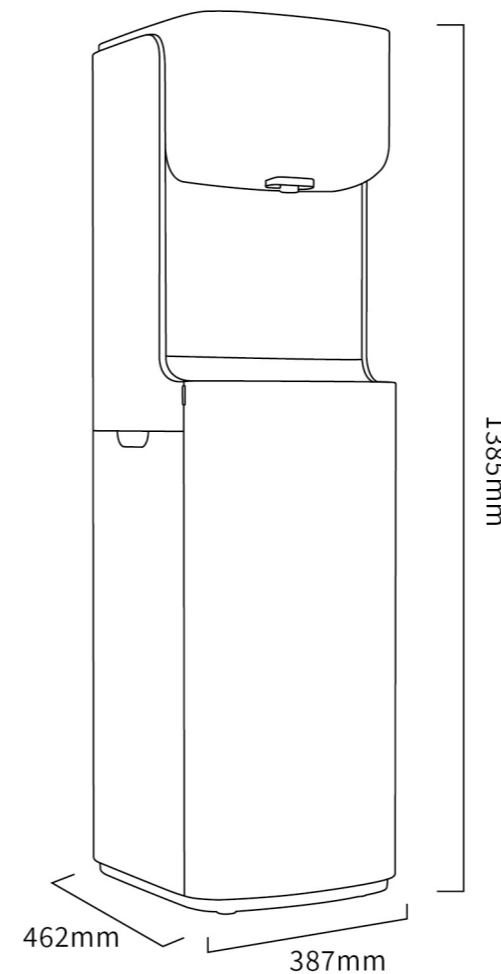
Hotel

SPECIFICATIONS

| | |
|---------------------------------|----------------------------|
| Model | FSD20T4RTG |
| Dimensions (H x D x W) | 1385 x 462 x 387 mm |
| Filtration Type | NF / RO |
| Filter Configuration | 3 Filters (PCFF+NF/RO+CTO) |
| Rated Voltage / Frequency | 220 ~ 240V / 50Hz |
| Water Temperature ^{*1} | Hot: ≥90°C |
| | Cold: ≤10°C |
| Water Tank Capacity | Ambient: 8L |
| | Hot: 5L |
| | Cold: 4L |
| Rated Power | Cooling:150W Heating:1500W |
| Water Leakage Protector | YES |

Precautions:

1. Actual water temperature and life of filter may vary according to usage environment.
2. Filtered water has been verified by SGS to meet drinking water standards, test report HKE25-C20680_002



G+ Nano Filtration

Dual-UV Sterilization

IoT Ready

Sustainability

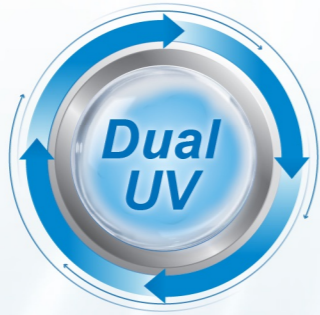
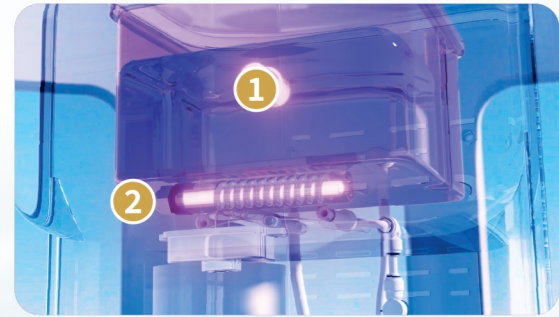
Freestanding Water Dispenser

FSD20T4RTG



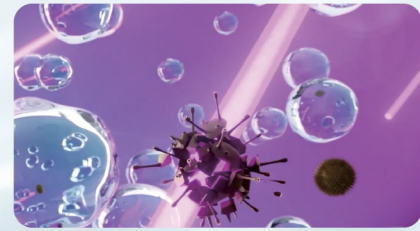
SAFETY

Innovative Dual-UV Technology



Dual UV Technology ensures purity of every sip

1 Submerged UV in Water Tank

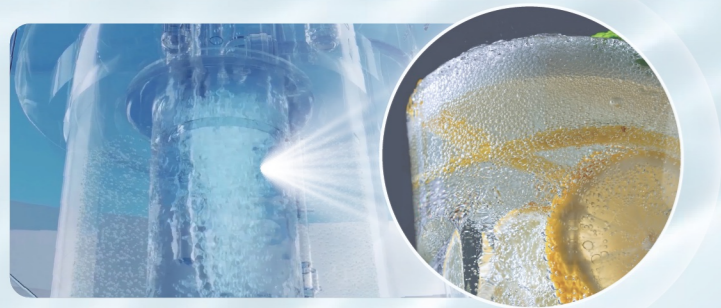


2 Flow-Through UV at Water Outlet



EFFICIENCY

G+fizz® Instant Aeration Technology with Efficient Cooling Capacity

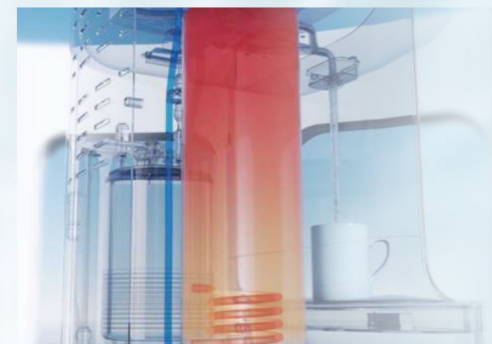


Instant Aeration System

Efficient Compressor Cooling

Instant Sparkling Water

Special Structural Design Providing Faster Heating Speed



Hot
≥90°C



Room temperature
5-38°C



Cold
≤10°C



Sparkling
≤10°C

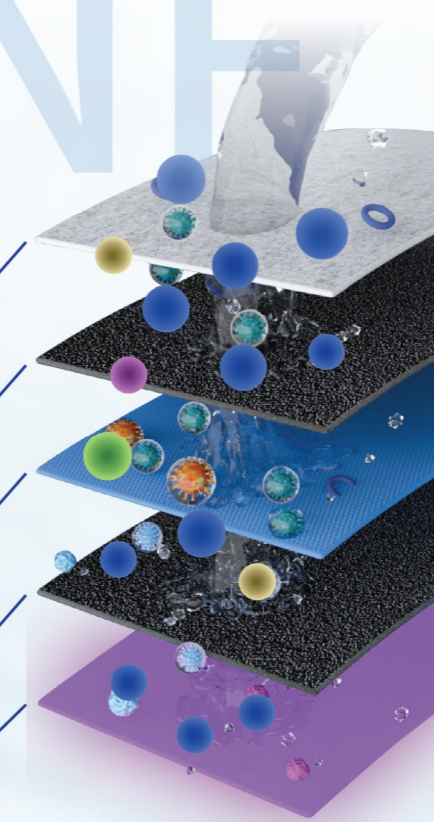


HEALTH & WELLNESS

6-Stage of Nano Filtration System

G+ Patented Filtration Technology Effectively Filters Harmful Materials Preserving 8 Benefits Minerals, Provide You with Healthier Water Supply

- Stage 1** **Polypropylene Cotton**
Pre-filtration filtering out silt, suspended solids, rust, etc
- Stage 2** **Compressed Activated Carbon**
Effectively adsorb harmful substances such as organic compounds and heavy metals
- Stage 3** **Nano Filtration Membrane**
Remove harmful substances such as bacteria and viruses, meanwhile retains 8 essential minerals
- Stage 4** **Compressed Activated Carbon**
Absorb colors and odors and provide better taste
- Stage 5 & 6** **Dual-UV Sterilization**
Ultimate protection to ensure the safety of every drop



High Contaminant Removal Efficiency



Protection from Harmful Substances



Multi-Stage Filtration Process



Improving Taste and Odor

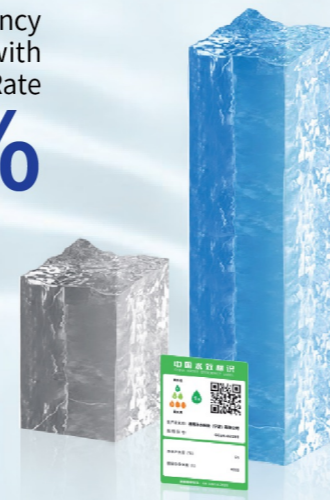
We Provide RO Filtration System Option to Fit Different Customer Need

*NF test report number: ASH20-005685-01
*RO test report number: ASH20-030899-01

SUSTAINABILITY

High-Efficiency Water-Saving Design with Water Purification Rate

65%



Reduce plastic consumption and save 6 tons of carbon emissions yearly by choosing water dispensers over bottled water



Annual Carbon Emissions

=



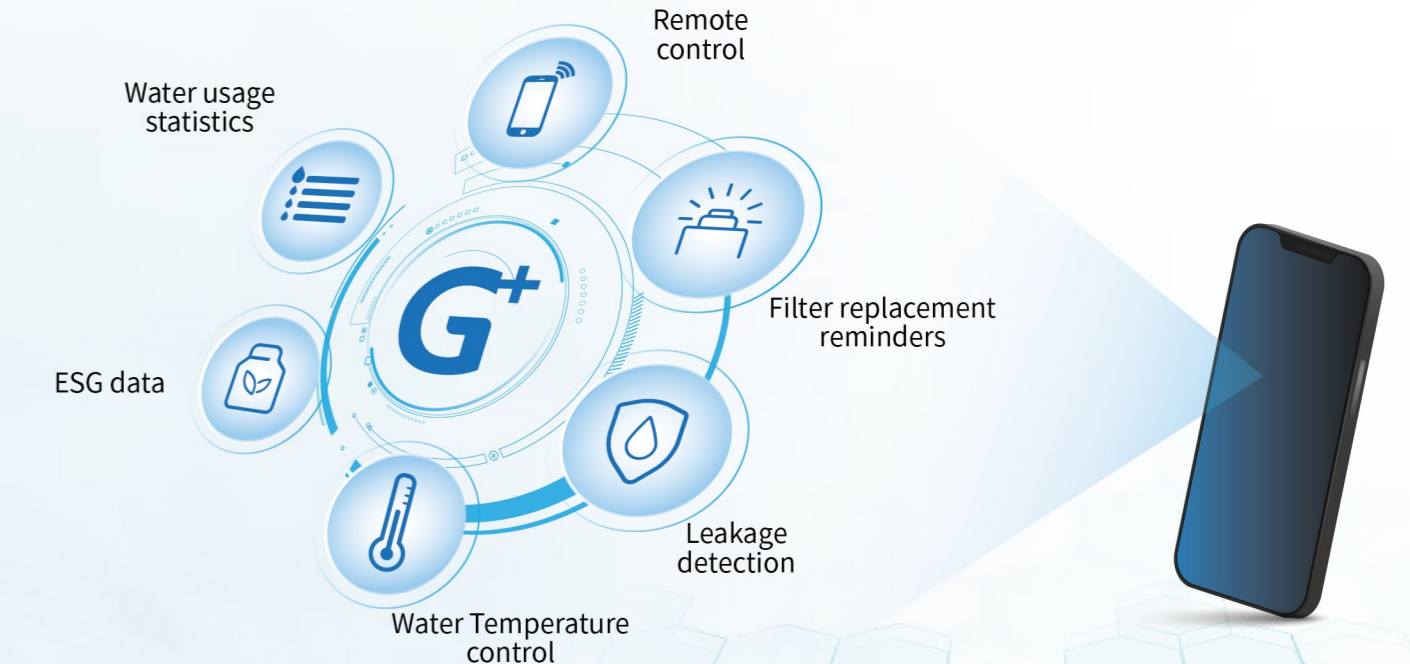
Data provided by third-party testing agency, Report Number: FG230217-02

*GWT data based on a 5L FSD20 model; actual carbon reduction depends on the actual water usage of each unit.

G+ SMART IOT

IoT-Enabled Purification with G+ Smart Platform

- Water Usage Statistics
- Scheduled Management
- Mode Settings
- Filter Lifespan Monitoring
- Filter Replacement Reminders
- Leak Detection and Water Shut-off Alerts



EASY OPERATION

Simple and Clear LED Ensures Easy Operation

